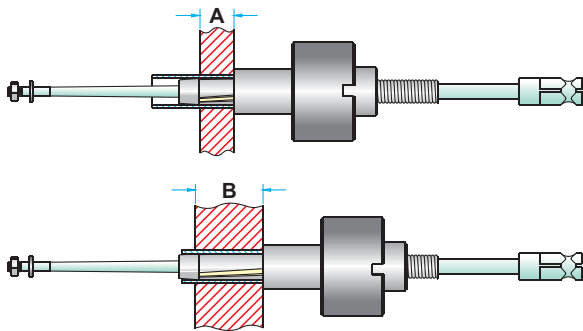


900 SERIES

1/4" - 3/8"
O.D.



FOR TUBES INTERNAL DIAMETER
FROM (3.8 mm) .152" TO (8.4 mm) .331"

| TUBE EXPANDERS FITTED WITH ROLLER LENGTH | FOR TUBE SHEET ADJUSTABLE RANGE | |
|--|------------------------------------|------------------|
| | MINIMUM A | MAXIMUM B |
| (19.05mm) 3/4" | (6.35mm) 1/4" | (19.05mm) 3/4" |
| (31.75mm) 1.1/4" | (19.05mm) 3/4" | (31.75mm) 1.1/4" |

- Use : Oil Coolers, Radiators and other apparatus with small diameter tubes.
- This tool has been the workhorse for several years for use on small diameter tubes.

| Tube O.D. (mm) inch | Tube Thickness | | | Tube I.D. | | Minimum I.D. Tool Enters | | Maximum Expansion of Tool | | EXPANDER with (19.05 mm) 3/4" Long Rollers | | | EXPANDER with (31.75 mm) 1.1/4" Long Rollers | | |
|---------------------------|----------------|------|------|-----------|------|-----------------------------|------|------------------------------|------|---|----------------|---------------------|---|----------------|---------------------|
| | bwg | mm | inch | mm | inch | mm | inch | mm | inch | Complete Tool No. | Mandrel No. | Rollers Set. No. | Complete Tool No. | Mandrel No. | Rollers Set. No. |
| (6.35) 1/4 | 20 | 0.88 | .035 | 4.5 | .180 | 4.4 | .175 | 5.1 | .200 | 923 | M-40 | 923 | - | - | - |
| | 21 | 0.81 | .032 | 4.7 | .186 | 4.5 | .180 | 5.2 | .207 | 924 | M-40 | 924 | - | - | - |
| | 22 | 0.71 | .028 | 4.9 | .194 | 4.8 | .190 | 5.5 | .216 | 925 | M-41 | 925 | - | - | - |
| | 23 | 0.63 | .025 | 5.0 | .200 | 4.9 | .195 | 5.6 | .222 | 926 | M-41 | 923 | - | - | - |
| | 24 | 0.55 | .022 | 5.2 | .206 | 5.1 | .201 | 5.8 | .230 | 927 | M-41 | 924 | - | - | - |
| | 28 | 0.35 | .014 | 5.6 | .222 | 5.6 | .222 | 6.0 | .238 | 928 | 928 | 903 | - | - | - |
| | 29 | 0.33 | .013 | 5.7 | .224 | 5.6 | .222 | 6.0 | .238 | 928 | 928 | 903 | - | - | - |
| (9.53) 3/8 | 30 | 0.30 | .012 | 5.7 | .226 | 5.6 | .222 | 6.0 | .238 | 928 | 928 | 903 | - | - | - |
| | 14 | 2.10 | .083 | 5.3 | .209 | 5.1 | .201 | 5.8 | .232 | 927 | M-41 | 924 | - | - | - |
| | 15 | 1.82 | .072 | 5.8 | .231 | 5.8 | .230 | 6.7 | .265 | 915 | M-42 | 903 | - | - | - |
| | 16 | 1.65 | .065 | 6.2 | .245 | 6.1 | .240 | 6.9 | .275 | 916 | M-36 | 916 | 916 L | M-36 L | 916 L |
| | 17 | 1.47 | .058 | 6.5 | .259 | 6.4 | .255 | 7.3 | .289 | 918 | M-38 | 903 | 920 | M-38 | 904 |
| | 18 | 1.24 | .049 | 7.0 | .277 | 6.9 | .272 | 7.8 | .307 | 901 | M-30 | 903 | 902 | M-30 | 904 |
| | 19 | 1.06 | .042 | 7.3 | .291 | 7.2 | .286 | 8.1 | .320 | 903 | M-31 | 903 | 904 | M-31 | 904 |
| | 20 | 0.88 | .035 | 7.7 | .305 | 7.6 | .300 | 8.4 | .334 | 905 | M-32 | 907 | 906 | M-32 | 908 |
| | 21 | 0.81 | .032 | 7.9 | .311 | 7.7 | .306 | 8.6 | .340 | 907 | M-33 | 907 | 908 | M-33 | 908 |
| | 22 | 0.71 | .028 | 8.1 | .319 | 7.9 | .314 | 8.8 | .349 | 909 | M-34 | 909 | 910 | M-34 | 910 |
| 3/8 | 23 | 0.63 | .025 | 8.2 | .325 | 8.1 | .320 | 9.0 | .357 | 911 | M-34 | 911 | 912 | M-34 | 912 |
| | 24 | 0.55 | .022 | 8.4 | .331 | 8.1 | .320 | 9.0 | .357 | 911 | M-34 | 911 | 912 | M-34 | 912 |

Note : All '900' series expanders come with 1/4" square mandrel drives. Round mandrel drives are optional.